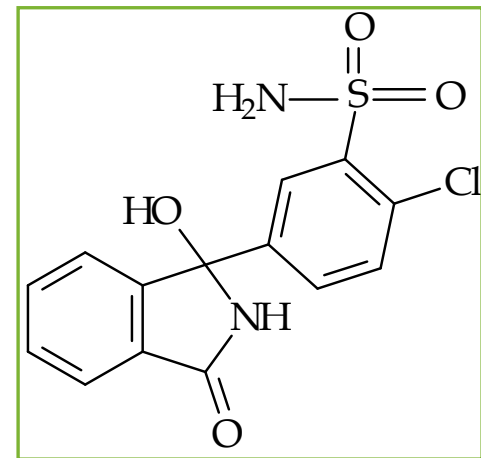


Chlorthalidone

- Chlorthalidone is an antihypertensive/diuretic. It is a monosulfamyl that differs chemically from thiazide diuretics in that a double-ring is incorporated in its structure. It is 2-chloro-5-(1-hydroxy-3-oxo-1-isoindolinyl) benzenesulfonamide. Chlorthalidone is indicated as adjunctive in associated with congestive failure, cirrhosis, and other therapy. Chlorthalidone has also been found useful in various forms of dysfunction, such as syndrome, glomerulonephritis, and failure. A new study just published in the US called “Allhat” (33.300 patients involved) shows how chlorthalidone is strongly effective against hypertension without the severe side-effects which occurs in patients being treated with some of the new ACE-Inhibitors.



CAS: [77-36-1]
Formula: C₁₄H₁₁ClN₂O₄S
M. Weight: 338,77