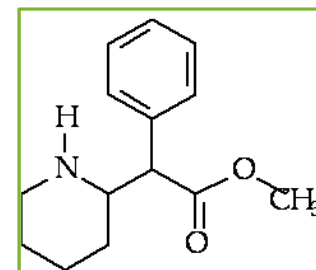


Methylphenidate HCl

- Methylphenidate hydrochloride is Methyl- α -phenyl-2-piperidine-acetate hydrochloride.
- It is a white, odourless, fine crystalline powder. Its solutions are acid to litmus. It is freely soluble in water and in methanol, soluble in alcohol, and slightly soluble in chloroform and in acetone.
- Methylphenidate hydrochloride is a mild central nervous system (CNS) stimulant, the main applications are Attention Deficit Disorders and Narcolepsy.
- It is available as 5, 10, and 20 mg tablets for oral administration. A 20 mg extended-release tablet for oral administration is also available. The mode of action in man is not completely understood, but methylphenidate presumably activates the brain stem arousal system and cortex to produce its stimulant effect.
- There is neither specific evidence which clearly establishes the mechanism whereby methylphenidate produces its mental and behavioral effects in children, nor conclusive evidence regarding how these effects relate to the condition of the central nervous system.



CAS: [113-45-1]
Formula:
 $C_{14}H_{19}NO_2 \cdot HCl$
M. Weight: 269,77